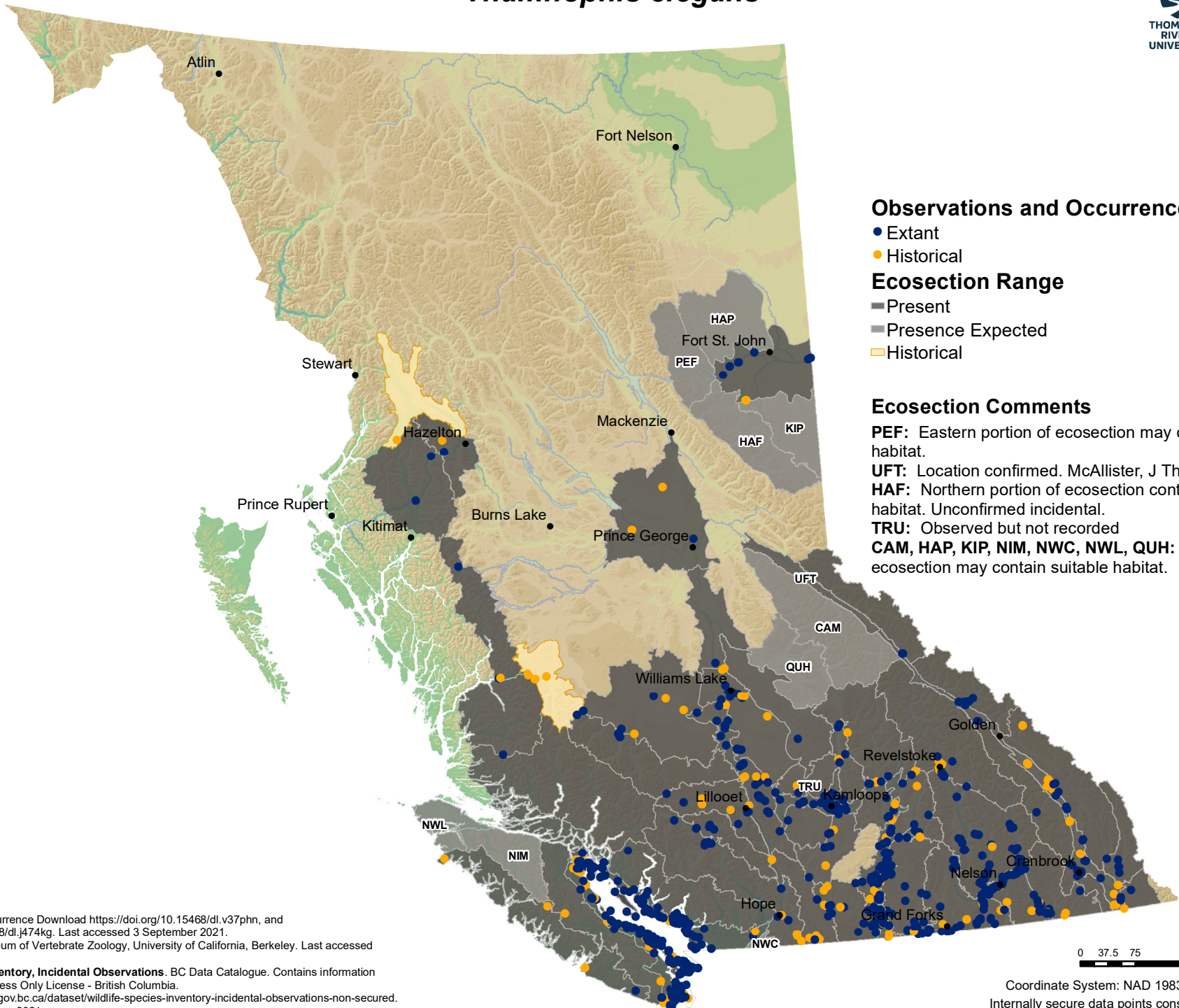


Terrestrial Gartersnake *Thamnophis elegans*



Observations and Occurrences

- Extant
- Historical

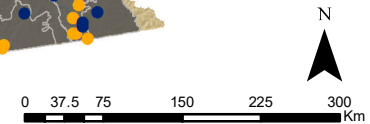
Ecoregion Range

- Present
- Presence Expected
- Historical

Ecoregion Comments

- PEF:** Eastern portion of ecoregion may contain suitable habitat.
- UFT:** Location confirmed. McAllister, J Thesis.
- HAF:** Northern portion of ecoregion contains suitable habitat. Unconfirmed incidental.
- TRU:** Observed but not recorded
- CAM, HAP, KIP, NIM, NWC, NWL, QUH:** Portions of ecoregion may contain suitable habitat.

Data Sources:
 - **GBIF.org.** GBIF Occurrence Download <https://doi.org/10.15468/dl.v37phn>, and <https://doi.org/10.15468/dl.j474kg>. Last accessed 3 September 2021.
 - **MVZ Berkeley.** Museum of Vertebrate Zoology, University of California, Berkeley. Last accessed September 2021.
 - **Wildlife Species Inventory, Incidental Observations.** BC Data Catalogue. Contains information licensed under the Access Only License - British Columbia. <https://catalogue.data.gov.bc.ca/dataset/wildlife-species-inventory-incident-observations-non-secured>. Last accessed November 2021.
 - **Contributions from subject matter experts.**



Coordinate System: NAD 1983 BC Environment Albers
 Internally secure data points considered but not displayed
 Date Drawn: 12/01/2021